

Extending the reach of your wireless network into hostile environments....



✓ Voice

✓ Fax

✓ Broadband

✓ Wireless LAN

✓ GPS

## Ruggedised voice and data access platform for hostile environments

The Calyptech RWG-100 is the ideal solution to access 3G wireless voice and broadband data services for customers that need a ruggedised wireless access solution deployed in hostile environments.

Using the RWG-100 connected to the wireless network infrastructure, your customers can experience an outstanding level of service and performance.

The Calyptech RWG-100 is a flexible, modular architecture that can be tailored to your needs, with Telephone, Fax, Wi-Fi, GPS and LAN interfaces, it offers a fully integrated gateway solution for the wireless network.

*“A flexible platform that cost effectively delivers voice, data and GPS services in hostile environments”*

The RWG-100 connects customers who require voice/ data services in hostile environments to the 3G wireless network infrastructure. The RWG-100 is the ideal solution for factory floor, vehicular, desert, polar and marine environments where a robust access gateway element is required to connect to the wireless network.

Offering Telephone, Fax, Broadband LAN and Wi-Fi (802.11b/g) interfaces, the RWG-100 becomes a standalone gateway to the services offered by wireless GSM and 3G network infrastructures. The RWG-100 also offers GPS feature; giving added flexibility for mobile installations and vehicle tracking.

Multiple RWG-100 units may be managed using a central server (TR-069 WAN Management Protocol), offering automatic software upgrade, with alarm and monitoring facilities.

The RWG-100 is the complete solution for ruggedised deployments requiring voice/data and GPS services

## Features

- Tri-band WCDMA 850/1900/2100
- Quad-band GSM 850/900/1800/1900 (optional)
- HSDPA, category 11 and 12, up to 7.2 Mbps (downlink); HSUPA 1 Mbps (uplink)
- Wi-Fi 802.11 b/g
- Separate Telephone and Fax interfaces, 5 REN
- Short Messaging Service (SMS)
- Circuit Switched Data (up to 33 kbps)
- Facsimile Group 3, 9.6 kbps, 14.4 kbps
- USB 2.0 ports (Print Server and Mass Storage)
- Two Port Ethernet Switch (RJ45)
- Software auto update
- Remote Management capability
- Flexible Modular architecture that can be tailored to applications including telemetry
- Provision for external antenna connection
- Router, Network Address Translation
- TR-069 CPE WAN Management protocol support



## Technical Specification Summary

### General

<b>Dimension (H x W x D):</b>	30mm x 125 mm x 165mm
<b>Weight:</b>	550g
<b>Unit power input:</b>	12VDC (nominal) (10-16VDC)
<b>Power consumption:</b>	8 W (average)
<b>Enclosure:</b>	Extruded aluminum (Black or metallic options)
<b>Operating Temperature:</b>	-10°C to +60°C
<b>Operating humidity:</b>	5 to 95%
<b>Storage Temperature:</b>	-45°C to +85°C
<b>Storage humidity:</b>	10 to 100%
<b>SIM-card:</b>	Standard USIM, 3V

### Compliance

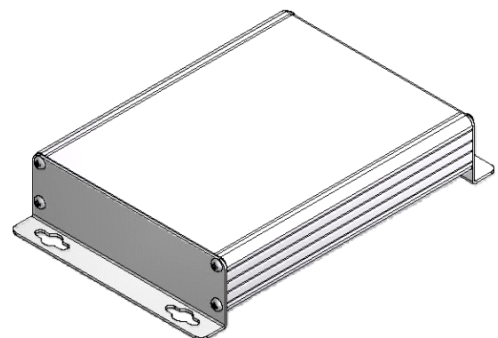
<b>AS/ACIF S003:2005</b>	Two wire ring-out/loop in
<b>AS/ACIF S004:2004</b>	Voice Frequency performance requirement for Customer Equipment
<b>ITU-T K.20:2003</b>	Resistibility of Telecommunications Equipment Installed in a Telecommunications Centre to Over-voltages and Over-currents
<b>ITU-T K.21:2003</b>	Resistibility of Telecommunications Equipment Installed in Customer Premises to Over-voltages and Over-currents
<b>AS/NZS 60950.1:2003</b>	Information technology equipment – safety, part 1 – general requirements
<b>AS/NZS CISPR 22:2004</b>	Information technology equipment – Radiation disturbance characteristics – limits and methods of measurement

## Standard Product Kit

- RWG-100 Unit
- Wi-Fi Antenna
- 850Mhz WCDMA Antenna
- AC Power Adapter (240V/50Hz)
- Installation Guide
- User Guide

## Accessories/Options

- Outdoor directional antenna (Yagi)
- Outdoor standard antenna
- GPS Antenna
- Pole-top and wall-mount fittings
- DC Adapter 10V—36V



# Applications



Wireless Network

✓ Security/Surveillance



✓ Wi-Fi



✓ Printer Server



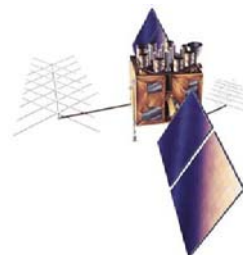
✓ Telephone



✓ Broadband



✓ Fax



✓ GPS

While every effort has been made to ensure the accuracy of the information contained in this document, Calyptech Pty. Ltd. accepts no responsibility for errors or omissions. Calyptech Pty. Ltd. reserves the right to make changes to product features and specifications without notice.