



- Intuitive rich graphical user interface with which to configure and control the Beethoven components
- Supports the creation of user defined groupings for comparison and alarming
- Provides both generalized and customized reports for Voice Quality information that reflects what is happening in your network
- Supports the targeting of resources at strategic areas of your network
- Protection for your data through Access Control Lists (ACL)

*“Aspect provides an intuitive portal to the Voice Quality and signaling metrics gathered by Beethoven VQAS in your network.”*

## Beethoven Aspect

### Presentation and reporting tool for voice data metrics in your network

Assuring Service and Performance levels in your network helps to keep you ahead of your competitors. Visibility to call and signaling information, including customer experience metrics gives you the control that allows you to deliver increased customer satisfaction and to maintain excellence in your network operations and support.

Aspect gives you the power to make sense of the voice quality information that the Beethoven Voice Quality Assurance solution gathers from your network. With so much data being collected there is a need to transform it into a form that makes sense to you, in your network context. Aspect performs that task.

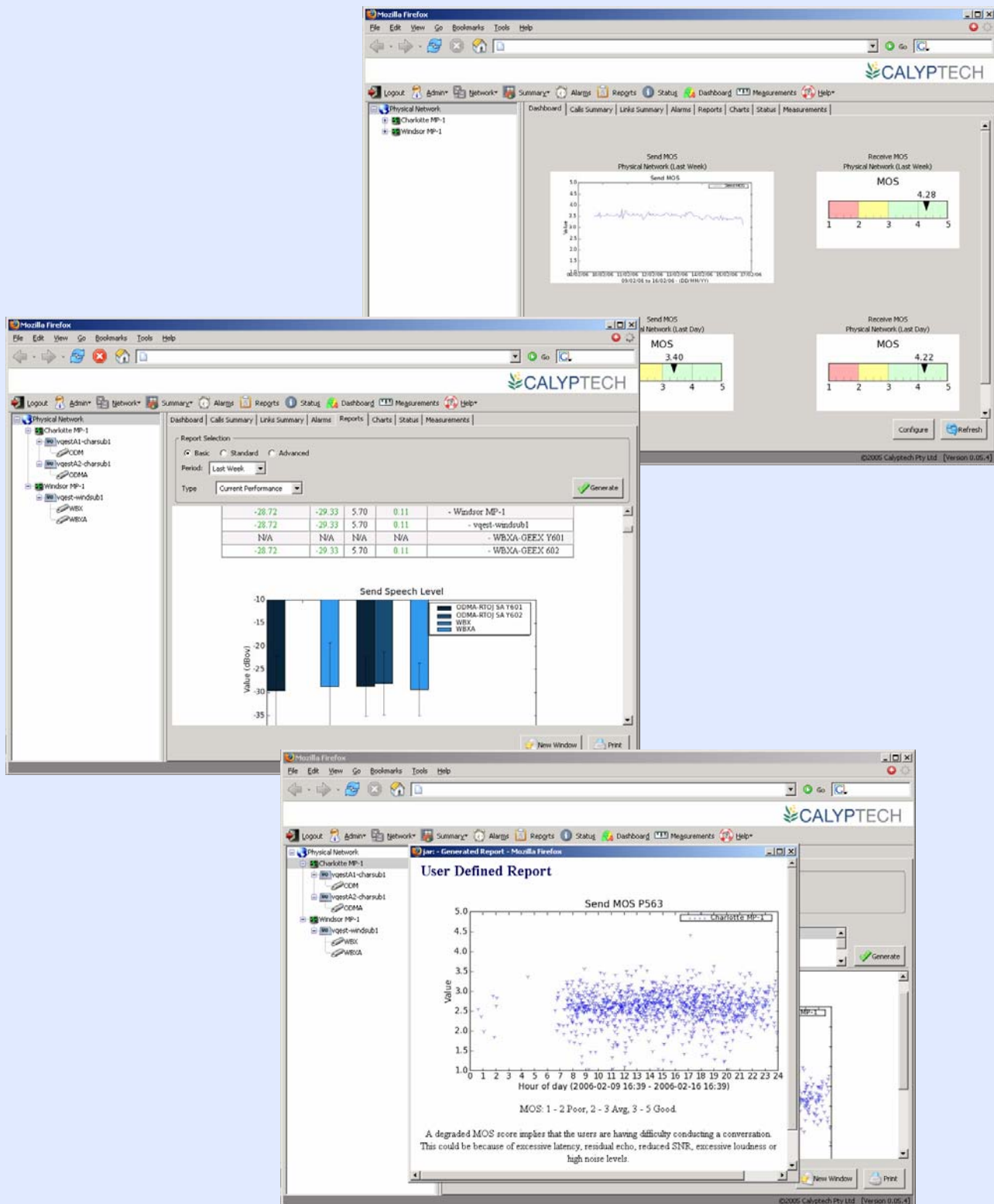
Aspect generates high level reports customized for your network, and also allows you to drill down and look at the voice quality of an individual call. It allows you to report on trends and spurious events. Alarms can be configured to alert Operations personnel of network degradation, before it is perceived by the end customer.

Together with the Beethoven Server and the other Beethoven solution elements, Aspect enables you to assure voice quality in your network, and guarantee end customer satisfaction.

# Specifications Summary

## Minimum Requirements

Operating System	Windows 2000 ®, Windows XP ®, Linux
Processor	Intel Pentium IV ®, 1.7GHz
RAM	512MB
Display	Super VGA (800 x 600) or higher-resolution monitor with 256 colors
Peripherals	Microsoft Mouse, Microsoft IntelliMouse®, or compatible pointing device



While every effort has been made to ensure the accuracy of the information contained in this document, Calyptech Pty. Ltd. accepts no responsibility for errors or omissions. Calyptech Pty. Ltd. reserves the right to make changes to product features and specifications without notice.